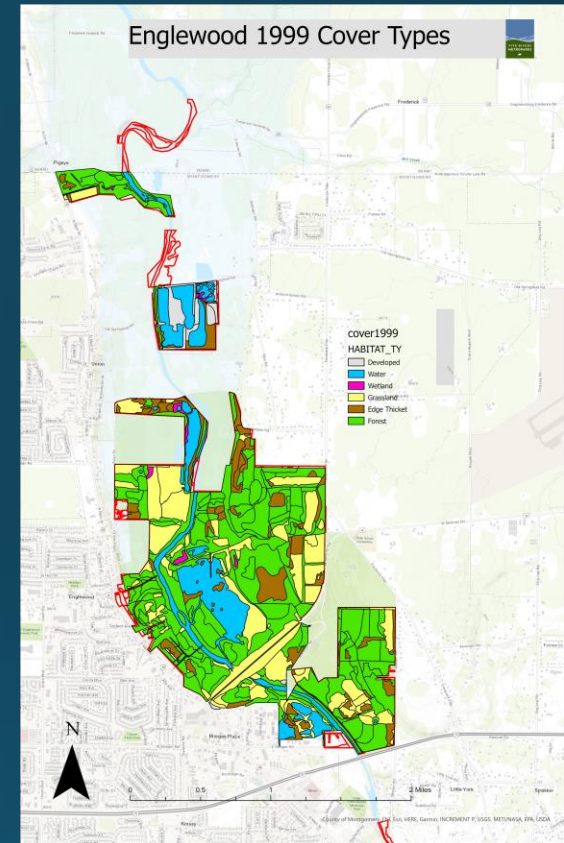


Five Rivers MetroParks Cover Mapping Volunteer Opportunity

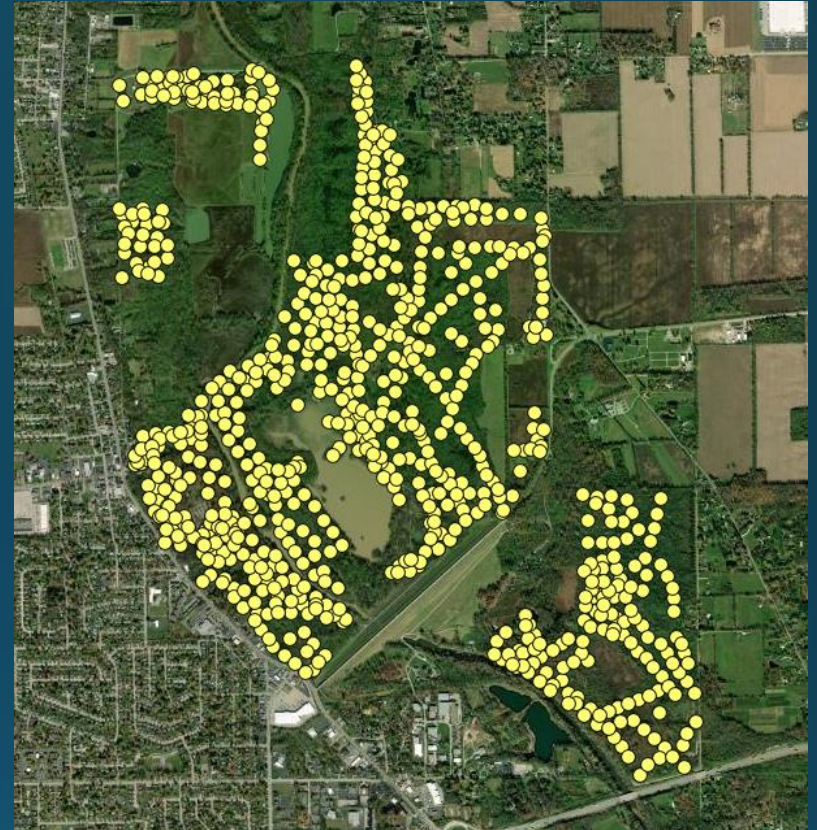
History

- Started at FRMP in 1998
- Intensive forestry assessment
- Included: size class, canopy, subcanopy, invasive species, herbaceous species, DBH, and deer signs
- Sample points every 100 m in survey units
- Recent Parks
 - Englewood – Currently
 - Carriage Hill – 2017-2018
 - Germantown – 2015 – 2017



Summary of 2023

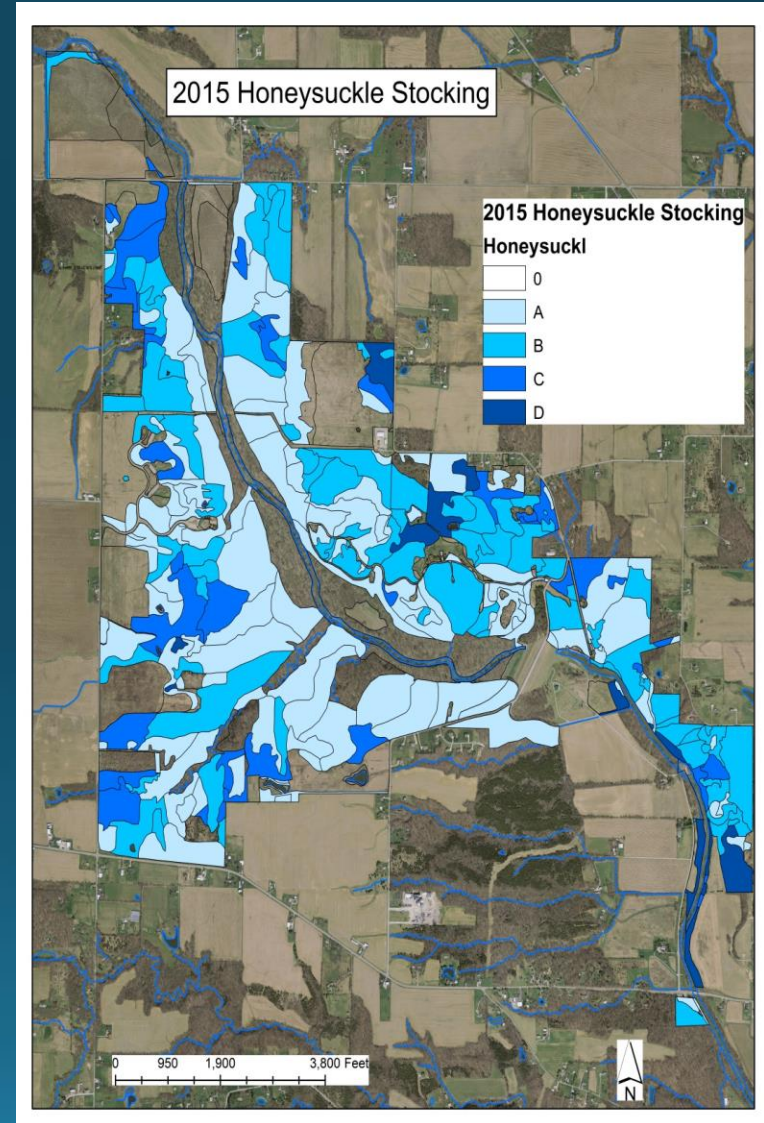
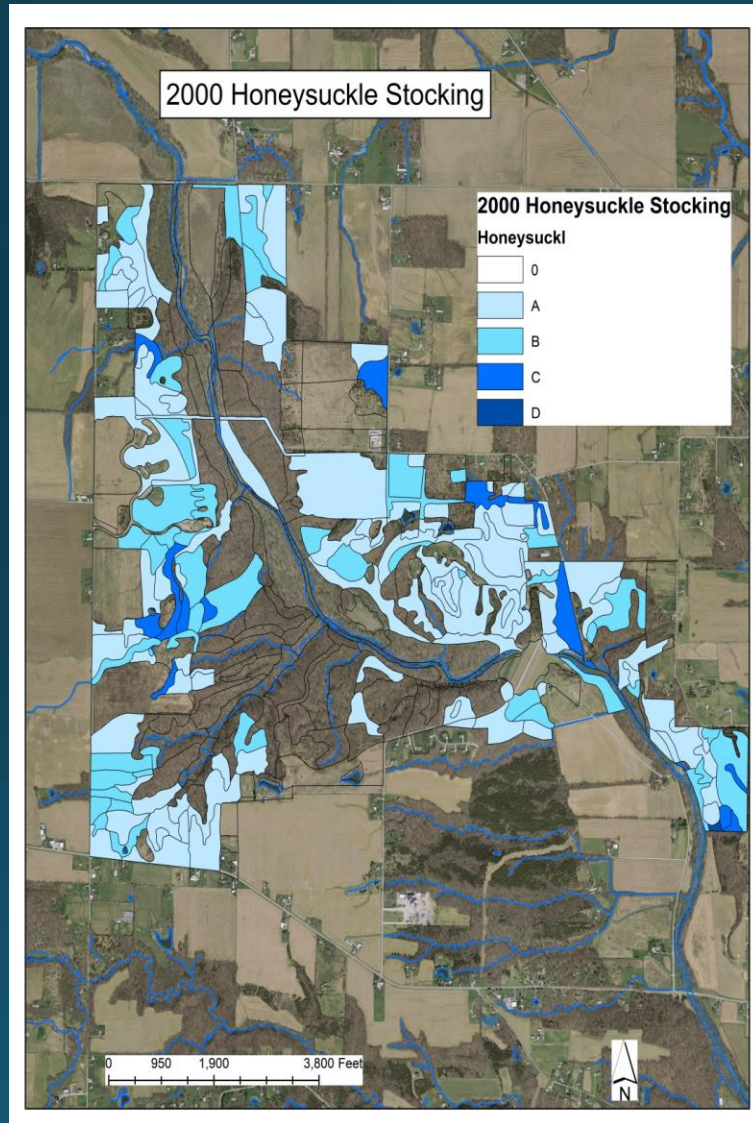
- Cover Mapping at Englewood
- 262 sample points in 2023
- 41 days
- Started Dec. 2022 – to be finished Spring 2024
- Results in Summer 2024
- Evaluation and updated protocol



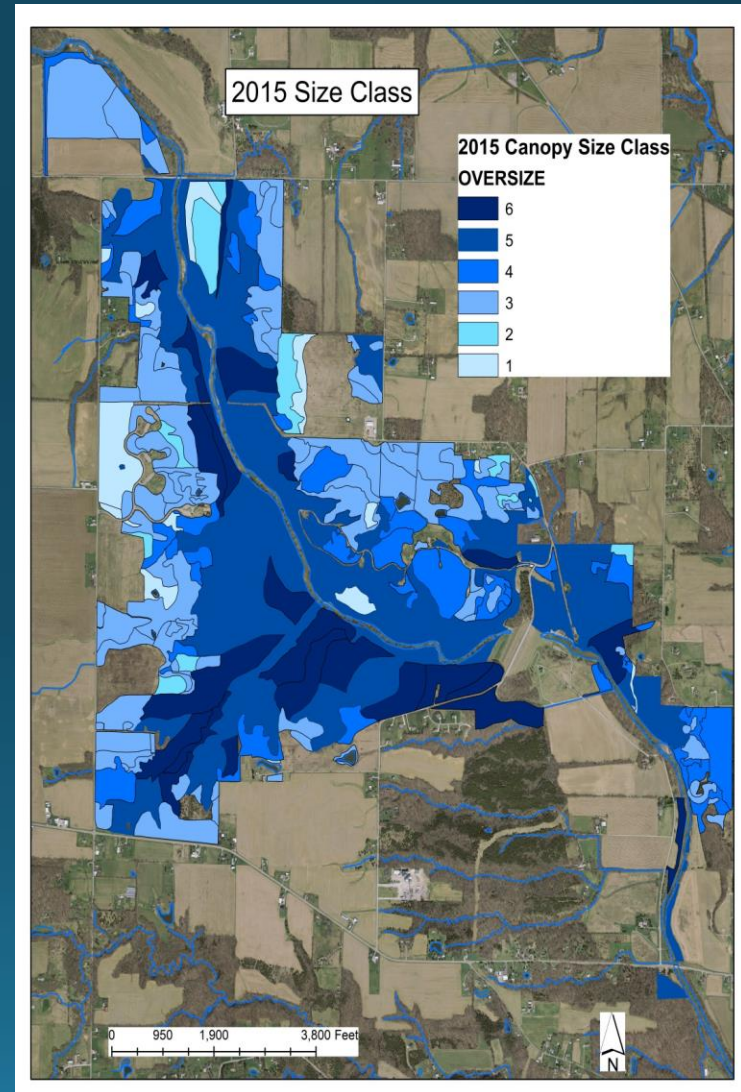
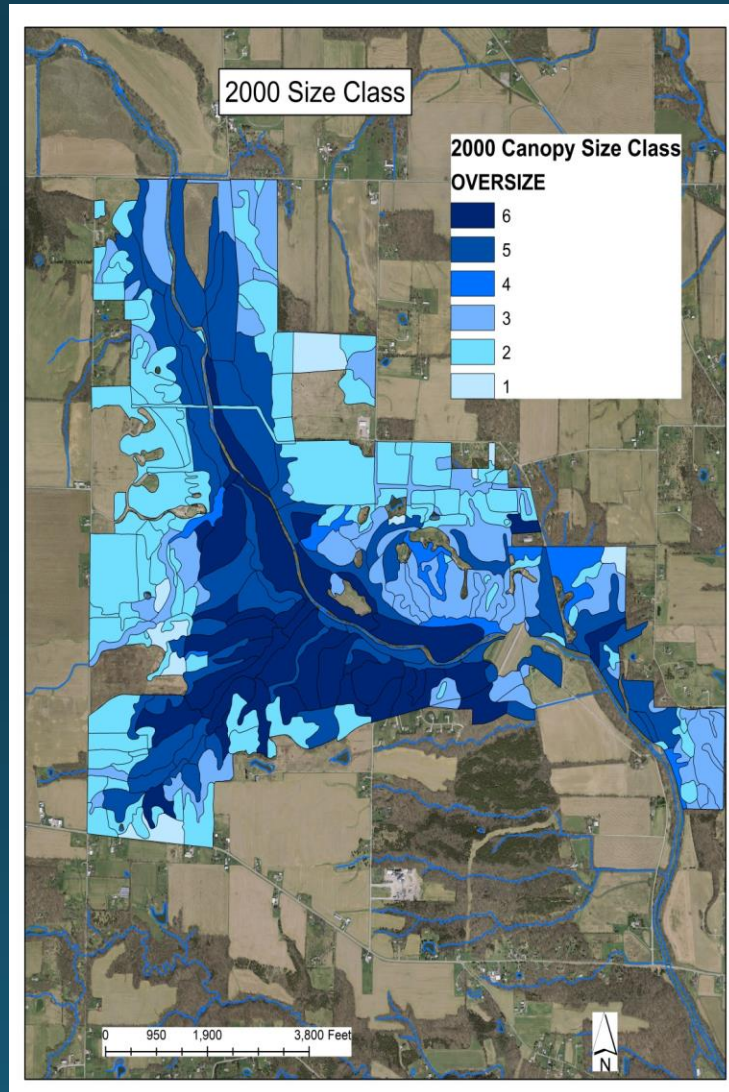
Identified Benefits

- Assists with identifying priority areas for invasive species management
- Baseline information on forest characteristics (canopy, subcanopy species, stocking rates, etc.)
- Extensive survey over large areas of land, some areas rarely visited by staff
- Knowledgeable, enthusiastic, reliable volunteers with detailed data collection

Compare honeysuckle densities over time

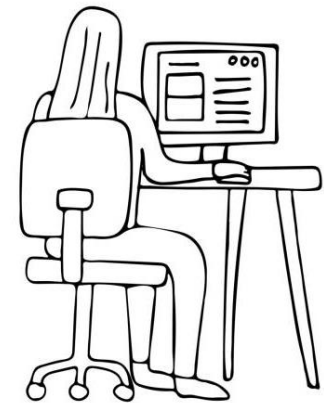


Compare forest size classes over time



Identified Challenges

- Time needed to complete a park
- Paper data collection and analysis
- Comfort level with plant ID
- Limitations with current data being collected and used for establishing action plans
- Sampling units were based on old aerial maps



Changes for 2024

**Rapid assessment of
forested areas**

- separate staff-led
protocol for grassland and
wetlands

**Each park surveyed every
5 years**

**Electronic data collection
– iPads/GPS**

Defined survey areas

Real-time results

**Enhance annual habitat
action plans, better
identify areas for contract
work and invasive species
removal**

Cover Mapping - Invasive Species

- Pre-defined 0.5 acre plots
- Data collected April – September
- 13 invasive species
- Data collection via iPad

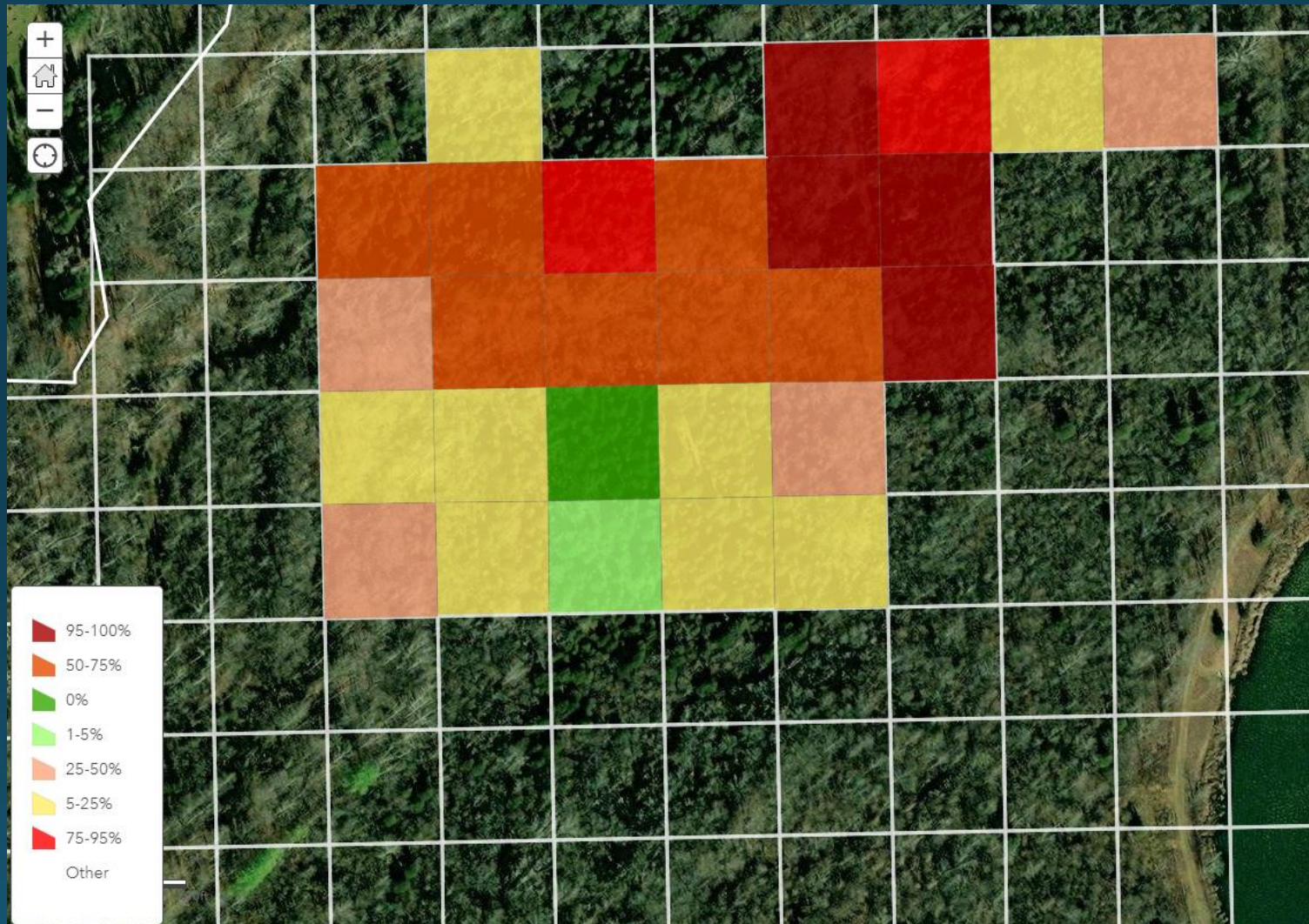
Woody Invasive Species	None present	Seedlings < 3' tall	Saplings 3-5' tall	Saplings > 5' tall and < 4" DBH	Large shrubs or trees > 5' tall and > 4" DBH	Density
Amur Honeysuckle				✕		50-75%
Autumn Olive	✕					0%
Buckthorn spp.		✕				25-50%
Burning Bush	✕					0%
Callery Pear	✕					0%
Privet			✕			1-5%
Siberian Elm	✕					0%
Tree of Heaven	✕					0%
Other Invasive Species	None present	Sparse ground coverage <50% of area	Extensive ground coverage >50% of area	Sparse ground coverage and tree climbing	Extensive ground coverage and tree climbing	
Lesser celandine		✕				
Periwinkle	✕					
English ivy				✕		
Oriental Bittersweet	✕					
Wintercreeper	✕					

Density
0%
1-5%
5-25%
25-50%
50-75%
75-95%
95-100%

Cover Mapping – Forest Community and Successional Type

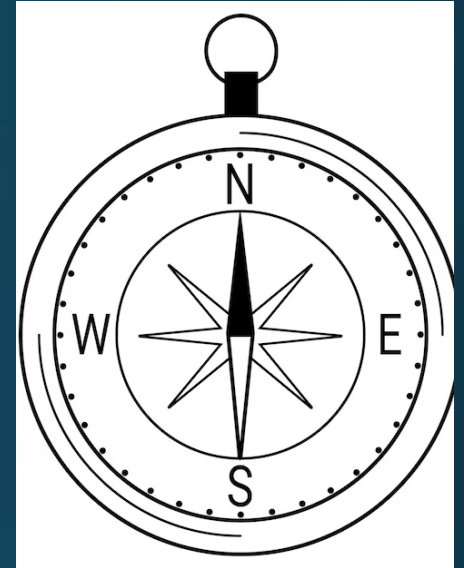
- Identify 0.5 acre plots by forest community and successional category
- Forest Community (Reference guide):
 - Oak-Hickory
 - Oak-Maple
 - Beech-Maple
 - Elm/Ash/Maple
 - Mixed Mesophytic
 - Cottonwood/Sycamore/Box Elder
 - Mixed Riparian Hardwoods
 - Pine/Spruce
 - Eastern Red Cedar
- Early Successional, Mid-Successional, Mature Woodland
- **2 volunteers – Importance of consistent classification, higher level of skill, reach out if interested.**

Easily create maps showing different densities, species, etc.



Volunteering – Cover Mapping

- 2024: Twin Creek MetroPark
- 2025: Cox Arboretum, Germantown MetroPark
- 100% Outdoors
- Often hiking off-trail
- Navigation with assistance of a GPS and compass
- Plant Identification skills
- Detailed data collection



Volunteering – Cover Mapping

1. Create an account on our volunteer webpage:
<https://metroparks.galaxydigital.com/user/login/>
 2. Attend an in-person training session
 1. Saturday, April 13th or Wednesday, April 17th
 3. Sign up for volunteer shifts through Get Connected
- Teams of 2-4
 - Both weekday and Saturday opportunities
 - Training held at Twin Creek MetroPark

Questions?

Lisa.Zoromski@metroparks.org