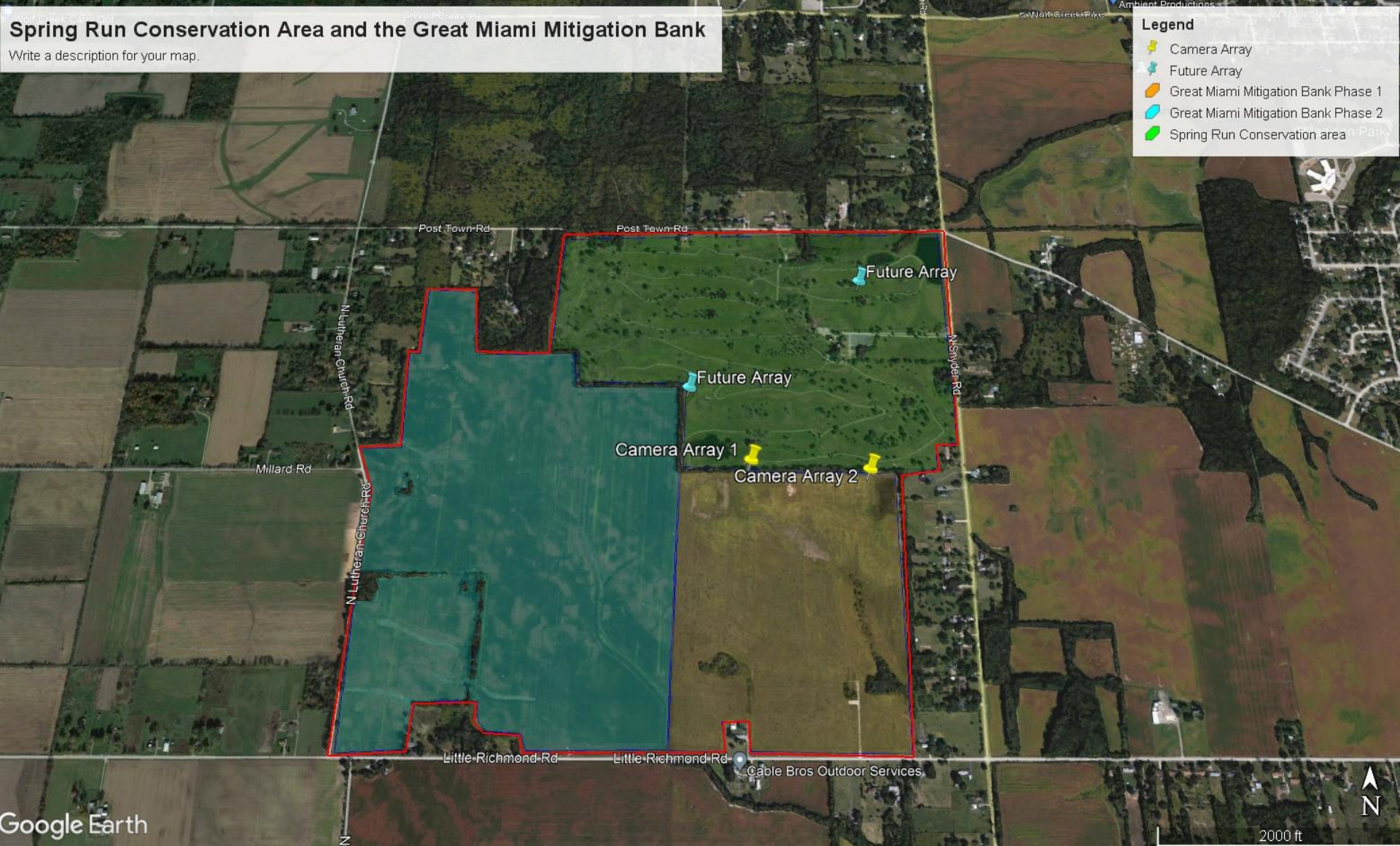




Reptile and Amphibian Conservation at FRMP

SARAH BROWNING

SARAH.BROWNING@METROPARKS.ORG



The Study Area

What is a camera array?

Each array consists of two buckets, one on each end of a fence.

Animal walk into the fence which diverts them into a bucket where a motion sensor trail camera captures their photo.

The animal then safely travels through a hole in the side of the bucket.



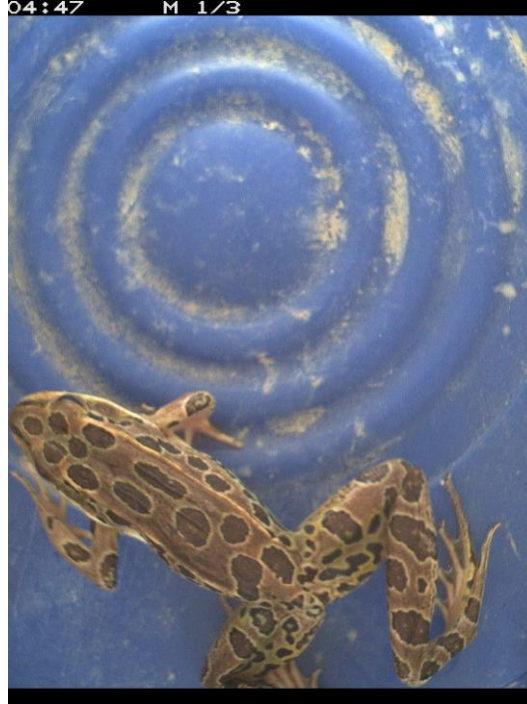
Species occupancy and abundance post wetland establishment, at Spring Run Conservation Area Trotwood, Ohio.

Objectives

- Document to further understand wildlife species diversity, abundance, and occupancy that occurs at Spring Run Conservation Area.
- Compare wildlife occupancy and abundance by array locations that vary in stages of wetland restoration.
- Compare changes in wildlife diversity and occupancy in a long-term assessment over time 10+ years.
- Identify any rare, state-listed, and other indicator species to initiate fast responses to any potential habitat improvement measures.



- Data was collected from 2 arrays with a total four cameras.
- The table provided shows the herpetofauna data collected from both camera arrays. Camera Array 1 ran from May to October of 2023 and Camera Array 2 ran from June to October of 2023.
- Both arrays continue to run present day.
- Plan to add 2 more arrays to the study area in the future.



Total 'Occurrences' by 'Species'

Species	Sum of Occurances
THAMNOPHIS SIRTALIS SIRTALIS	93
LITHOBATES PIPIENS	84
LITHOBATES CLAMITANS MELANOTA	25
LITHOBATES SP	10
CHRSEMYS PICTA MARGINATA	5
LITHOBATES CATESBEIANA	4
ANAXYRUS FOWLER	3
CHELYDRA SERPENTINA	3
UNKNOWN FROG	3
ANAXYRUS AMERICANUS	2
ANAXYRUS SP	1
UNKNOWN TURTLE	1
COLUBER CONSTRICTOR CONSTRICTOR	1
LAMPROPETLIS TRIANGULUM	1
Grand Total	236

We captured over 30,000 images from May to October in 2023!

We are currently using Wildlife Insights to Classify these images.



Turtle Nest Predator Guards
